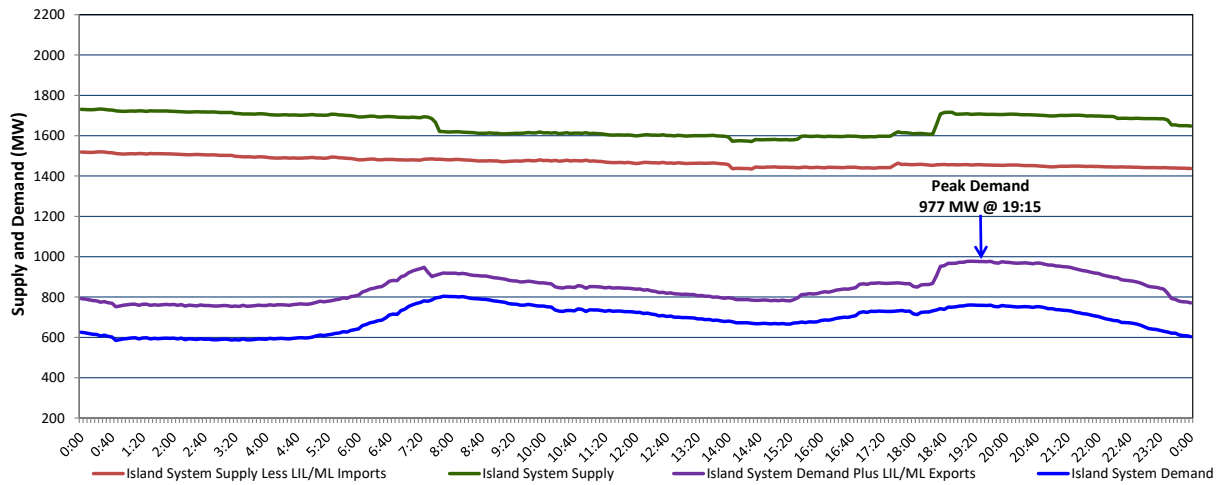


Newfoundland Labrador Hydro (NLH) Supply and Demand Status Report Filed Thursday, October 13, 2022

Section 1 Island Interconnected System Supply, Demand & Exports Actual 24 Hour System Performance For Wednesday, October 12, 2022



Supply Notes For October 12, 2022

1,2

- A As of 0800 hours, July 31, 2022, Holyrood Unit 2 unavailable due to planned outage 150 MW (170 MW).
- B As of 1040 hours, August 27, 2022, Holyrood Unit 3 available but not operating (150 MW).
- C As of 1304 hours, September 26, 2022, Hinds Lake Unit available at 65 MW (75 MW).
- D As of 1033 hours, September 27, 2022, Stephenville Gas Turbine unavailable (50 MW).
- E As of 1135 hours, October 05, 2022, Bay d'Espoir Unit 3 unavailable due to planned outage (76.5 MW).
- F As of 1628 hours, October 10, 2022, Bay d'Espoir Unit 4 unavailable due to planned outage (76.5 MW).
- G As of 1017 hours, October 11, 2022, Holyrood Unit 1 available at 150 MW (170 MW).

Section 2 Island Interconnected Supply and Demand

Thu, Oct 13, 2022	Island System Outlook ³	Seven-Day Forecast	Temperature (°C)		Island System Daily Peak Demand (MW)	
			Morning	Evening	Forecast	Adjusted ⁷
Available Island System Supply: ⁵	1,711 MW	Thursday, October 13, 2022	10	9	1,095	1,095
NLH Island Generation: ^{4,8}	1,140 MW	Friday, October 14, 2022	9	9	835	835
NLH Island Power Purchases: ⁶	90 MW	Saturday, October 15, 2022	8	11	800	800
Other Island Generation:	220 MW	Sunday, October 16, 2022	11	13	780	780
ML/LIL Imports:	261 MW	Monday, October 17, 2022	14	14	785	785
Current St. John's Temperature & Windchill:	11 °C	Tuesday, October 18, 2022	13	12	815	815
7-Day Island Peak Demand Forecast:	1,095 MW	Wednesday, October 19, 2022	12	12	790	790

Supply Notes For October 13, 2022

3

- Notes:
1. Generation outages for running and corrective maintenance are included. These are not unusual for power system operations. They generally do not impact customer supply. The power system operators schedule outages to system equipment whenever possible to coincide with periods when customer demands are low and sufficient supply reserves are available. However, from time to time equipment outages are necessary and reserves may be impacted.
 2. Due to the Island system having no synchronous connections to the larger North American grid, when there is a sudden loss of large generating units there may be a requirement for some customer's load to be interrupted for short periods to bring generation output equal to customer demand. This automatic action of power system protection, referred to as under frequency load shedding (UFLS), is necessary to ensure the integrity and reliability of system equipment. Under frequency events have typically occurred 5 to 8 times per year on the Island Interconnected System and the resultant customer load interruptions are generally less than 30 minutes. With the activation of the Maritime Link frequency controller during the winter of 2018, UFLS events have occurred less frequently.
 3. As of 0800 Hours.
 4. Gross output including station service at Holyrood (24.5 MW) and improved NLH hydraulic output due to water levels (35 MW).
 5. Gross output from all Island sources (including Note 4).
 6. NLH Island Power Purchases include: CBPP Co-Gen, Nalcor Exploits, Rattle Brook, Star Lake, Wind Generation and capacity assistance (when applicable).
 7. Adjusted for curtailable load, market activities and the impact of voltage reduction when applicable.
 8. Due to limitations inherent in the design of combustion turbines, the output of combustion turbines may be reduced in the event that ambient temperatures exceed the threshold

Section 3 Island Peak Demand Information Previous Day Actual Peak and Current Day Forecast Peak

Wed, Oct 12, 2022	Actual Island Peak Demand ⁹	19:15	977 MW
Thu, Oct 13, 2022	Forecast Island Peak Demand		1,095 MW

Notes: 9. Island Demand / LIL / ML Exports (where applicable) is supplied by NLH generation and purchases, plus generation owned and operated by Newfoundland Power and Corner Brook Pulp & Paper (Deer Lake Power, DLP).